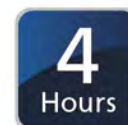


MobIR[®] M8

MobIR[®] is a mobile like infrared camera.

IR CAMERA,
A NEW
EQUIPMENT
FOR MODERN
MEDICAL
DIAGNOSIS.



MobIR[®] M8

MobIR[®] is a mobile like infrared camera.



MobIR® M8

MobIR® M8	
Imaging Performance	
<i>Thermal</i>	
Detector Type	Microbolometer UFPA 160x120 pixels, 25 μ m
Spectral Range	8-14 μ m
Field of View	20.6° X 15.5°
Thermal Sensitivity	≤0.1 °C at 30 °C
Image Frequency	50HZ PAL/ 60HZ NTSC, non-interlaced
<i>Visual</i>	
Built-in Digital Video	CMOS Sensor, 1600x1200 pixels, 2 ²⁴ ture colors
Image Presentation	
External Display	2.47" TFT LCD with high resolution
Picture in Picture	PIP , total thermal, total visual,IR Fusion switchable
Measurement	
Temperature Range	0°C to 60°C
Accuracy	±0.5°C
Measurement Modes	Auto hot & cold spot, auto alarm live/zomed image & video; spots, areas displaying either max, min or average, line profile, histogram & isotherm band in live/frozen/saved image
Storage	
Type	Removable 2GB Mini SD card & built-in memory
Video Recording	Powerful recording up to 30 minutes in Mini SD card
Laser Locator	
Classification Type	Class 2 semiconductor laser
Power System	
Battery Type	Recharge Li-ion Camcorder battery, field-replaceable
Battery Operating Time	4 hours continuous operation
Environment	
Operating Temperature	-10°C to 60°C
Storage Temperature	-20°C to 60°C
Interface	
USB2.0	Real-time image, video data transfer to PC and real-time control of the camera on PC
RS232 communication	Control of camera on PC
Physical Characteristics	
Size	154mmx69mmx45mm
Weight	0.35kg(including battery)

MobIR[®] M8

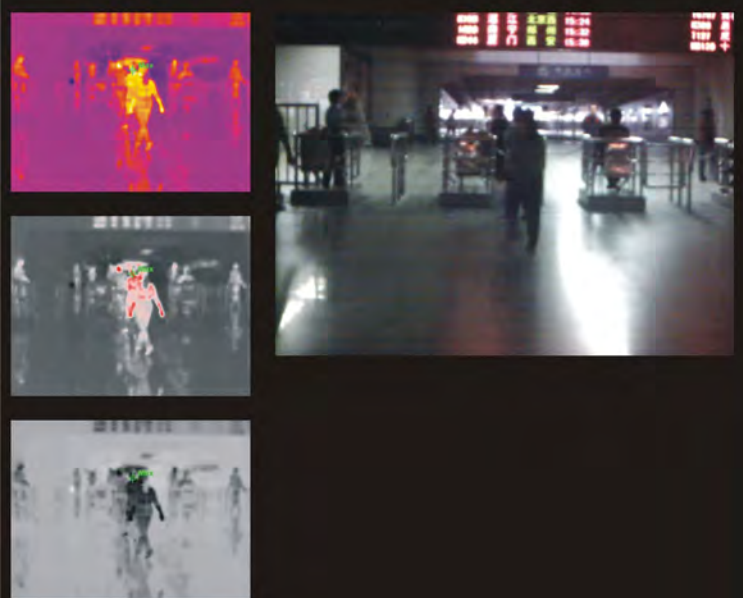
Public health

A small investment to protect public health

As dangerous virus epidemics spread, such as the swine flu, SARS and other viral infections, public health authorities around the world need a fast, easy, contactless, non-invasive and reliable method to detect elevated human body temperature differences. Infrared camera technology is such a method.



车次	始发站	终到站	开车时间	运行状态	车次	始发站	终到站	开车时间	运行状态
K8055	长沙	武昌	14:48	晚点20分钟	D3019	上海	武昌	16:00	
T102	长沙	武昌	14:50		T8787	黄石	武昌	16:06	
K158	长沙	北京西	15:24		K398	黄石	武昌	16:31	
1628	长沙	郑州	15:32		T127	成都	东莞东	16:46	
K244	长沙	西安	16:38		K8129	十堰	武昌	17:00	



MobIR[®] M8

M Medical Diagnosis

A quick and reliable way for medical diagnosis

Medical thermography, is an accurate, quantifiable, non-contact, non-invasive, diagnostic technique that allows the examiner to visualise and quantify changes in skin surface temperature using high performance infrared cameras.

Where it can be applied ?

Medical research has shown infrared camera to be a useful tool in research as well as being helpful in:

- ✘ diagnosis of Breast Cancer
- ✘ Nervous System Disorders
- ✘ Metabolic Disorders
- ✘ Neck and Back Problems
- ✘ Pain Syndromes
- ✘ Vascular Disorders
- ✘ Arthritis



MAX=37.4° C

Veterian helper

A high-effective helper for veterian

Infrared thermography is based on analysis of skin surface temperatures as a reflection of normal or abnormal human physiology using a high performance infrared camera. The camera generates images with thermal data in real time and in a fraction of a second, a large area of the human body can be imaged and dynamic responses to stimuli are easily documented.

Where it can be applied ?

- ✘ Inflammation
- ✘ Muscle injury
- ✘ Preventive medicine
- ✘ Nerve injury

MobIR[®] M8

